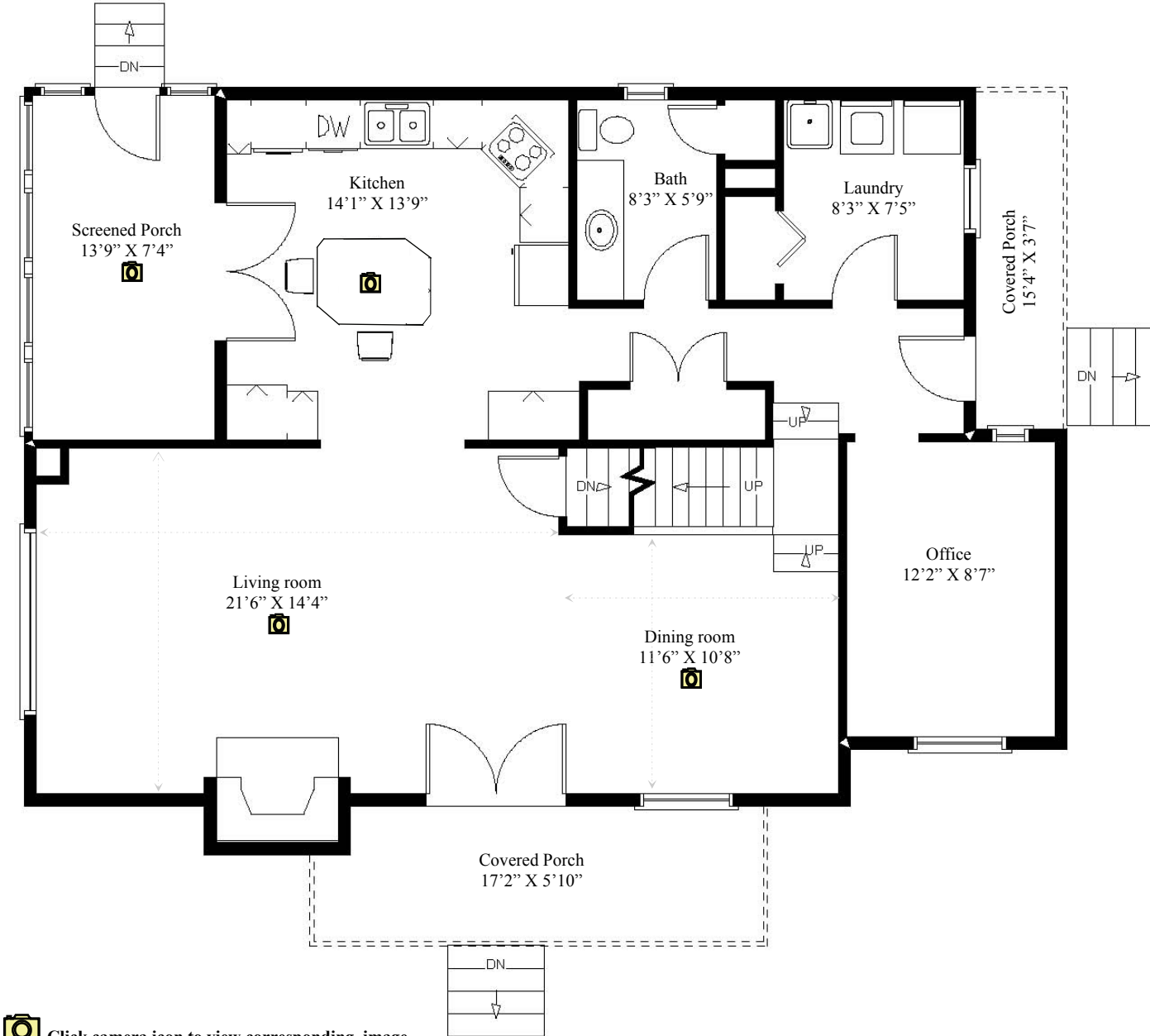



2060 Wellington Street
Battersea, ON

MAIN LEVEL



 Click camera icon to view corresponding image.

Note: This floor plan is an artistic rendering only. All dimensions are approximate. Defined Lines and the listing agent make no representation or warranty as to this rendering's accuracy and no measurements or dimensions should be relied upon without independent verification.



**Royal LePage ProAlliance Realty,
Brokerage**

80 Queen Street
Kingston, ON K7K 6W7

Office: 613-544-4141

Judy Dennee (sales rep.)
Direct: 613-329-9333
Email: judy@dennee.com

Don Dennee (sales rep.)
Direct: 613-328-3333
Email: don@dennee.com

Cheryl South
Direct: 613-453-7778
Email: cheryl@dennee.com

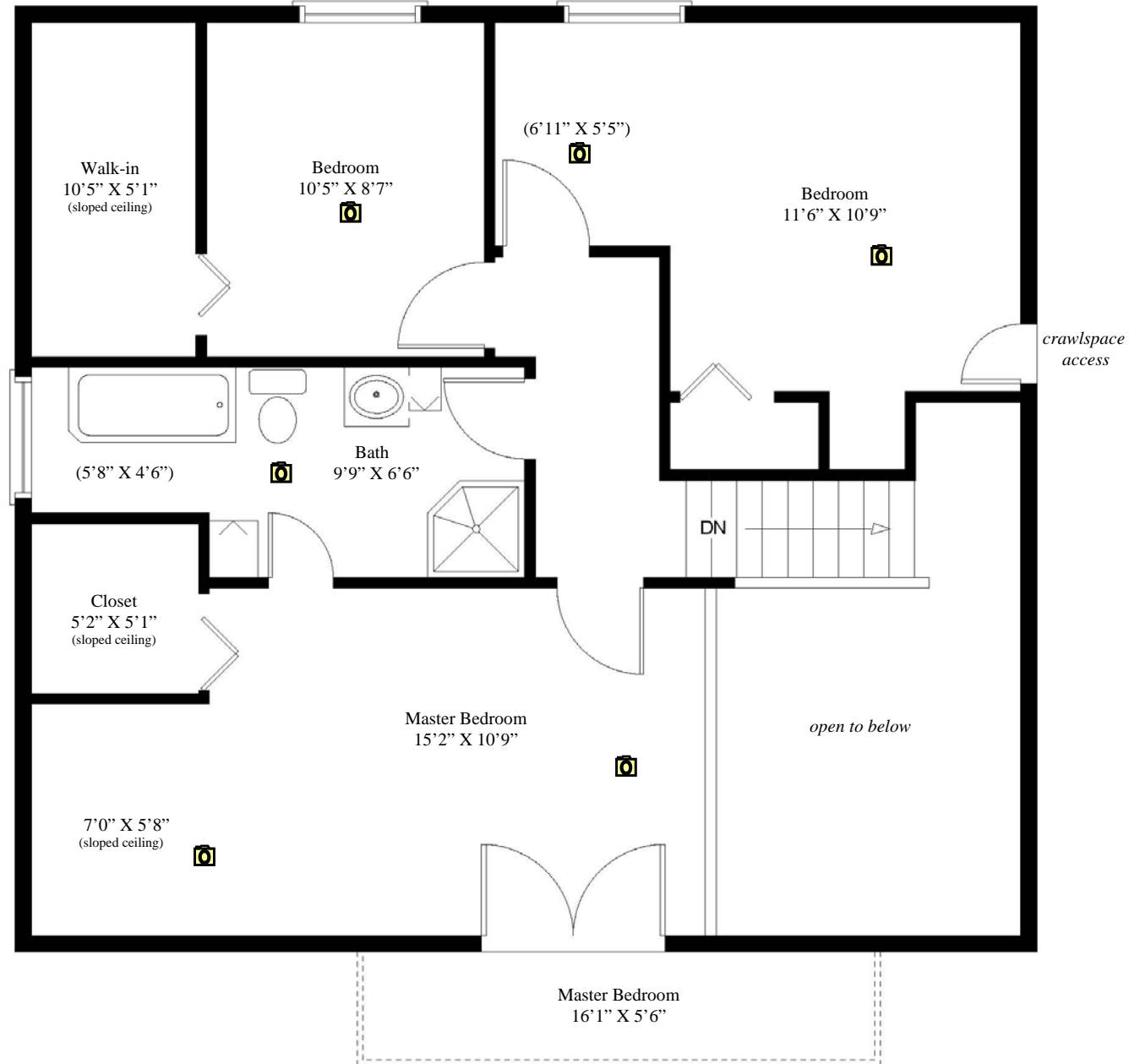
www.dennee.com



(Scroll to view other levels)

2060 Wellington Street
Battersea, ON

UPPER LEVEL



Judy Dennee (sales rep.) - Direct: 613-329-9333 E-mail: judy@dennee.com



Don Dennee (sales rep.) - Direct: 613-328-3333 E-mail: don@dennee.com

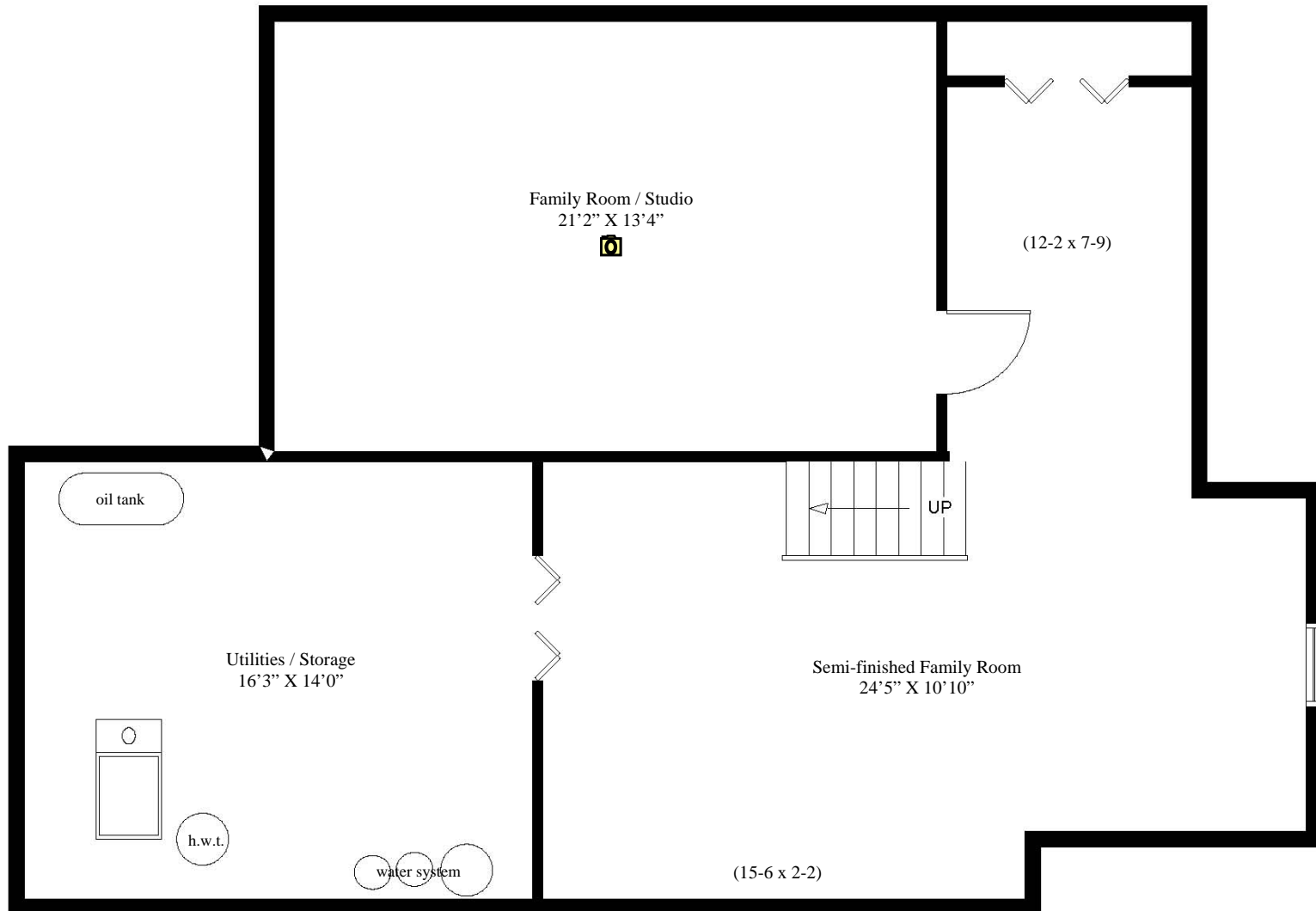
Note: This floor plan is an artistic rendering only. All dimensions are approximate. Defined Lines and the listing agent make no representation or warranty as to this rendering's accuracy and no measurements or dimensions should be relied upon without independent verification.



(Scroll to view other levels)

2060 Wellington Street
Battersea, ON

LOWER LEVEL



Judy Dennee (sales rep.) - Direct: 613-329-9333 E-mail: judy@dennee.com
Don Dennee (sales rep.) - Direct: 613-328-3333 E-mail: don@dennee.com

Note: This floor plan is an artistic rendering only. All dimensions are approximate. Defined Lines and the listing agent make no representation or warranty as to this rendering's accuracy and no measurements or dimensions should be relied upon without independent verification.



(Scroll to view other levels)